

ORHANGAZI
(BURSA)
G22-C-21 -C

G22-c-21 -b

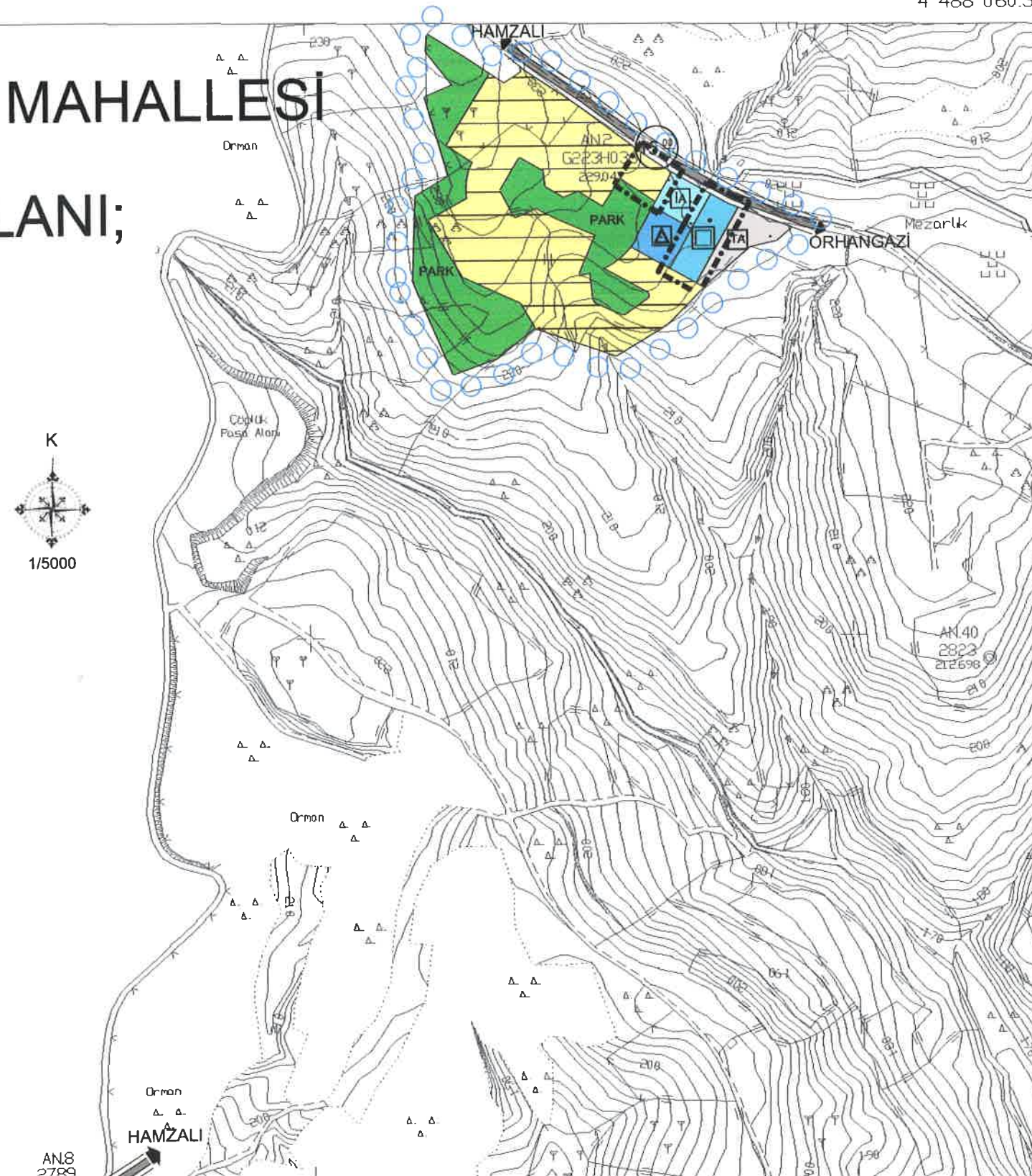
4 488 060.31

BAZI İLÇESİ, ARAPZADE MAHALLESİ

İNA AİT NAZIM İMAR PLANI;

A SINIRI

İŞME KONUT ALANI (121-250 KİŞİ/HA)



440 684.37

İTİF 96 KOORDİNAT SİSTEMİNDE VE 2000/43
EPOCUNDA AK MAKİNA HRT. İNŞ. TURİZM SAN.
TİC. LİTD. ŞTİ. TARAFINDAN YAPILAN 12 ADET
HALİHAZIR HARİTA ONANDI.

11/11/2008



2

İLLER BANKASI
A. SERDAR TIRYAKI
HARİTA DAİRESİ BAŞKANI

11